

DRive DIGITAL IMAGING

**COST EFFECTIVE
FLAT PANEL
DIGITAL RADIOGRAPHY
UPGRADE SOLUTIONS**



Quantum
MEDICAL IMAGING
Division of Carestream

DRive

DIGITAL IMAGING

DRive is a digital imaging DR hardware & Software solution designed for General Radiography of anatomy. It is intended to replace film/screen or CR screen based radiographic systems for all general purpose diagnostic procedures.

DRive is a flat panel digital radiography upgrade solution offering a 14" x 17" tethered detector and/or a 17" x 17" fixed detector. Designed for general radiographic applications using a unique image processing system and proprietary flat panel detector technology.

DRive ensures superior image quality for today's high standards in precise diagnosis with spatial resolution of 3.5 lp/mm.



- Cost effective DR solution for upgrades to existing X-ray system
- Tethered (portable) and fixed panel DR solutions for maximum flexibility in virtually all general radiographic specialties. (Medical, Podiatry, Chiropractic, Veterinary Software)
- Tethered 14" x 17" detector fits into most existing X-ray system tables or wall stands
- Fast-DR Workflow using your existing X-ray equipment
- Multiple Room PACS Viewing Software included

Image Display in Only 3 Seconds

A preview image is displayed immediately after X-ray exposure, allowing for prompt image confirmation, fast network distribution, and quick patient throughput.

Extensive Network Capabilities

DICOM 3.0 compatibility provides image data transfer to any DICOM device, PACS, or RIS for efficient data management, printing, archiving, and remote image viewing. Workflow efficiency means less wait time for patients, as well as higher patient throughput. Provides consistent image quality at a dramatically reduced dose and faster image information and optimized algorithms for each different study.

Speed with Precision

Digital detector technology allows images to be previewed within seconds after the exposure. The results can be automatically sent to other viewing stations, printers, and archive servers on the facility network.

Cost Effective

HIGH QUALITY DIGI



Benefit from the advantages of rapid DR workflow

TAL RADIOGRAPHY

DRive DR Acquisition Console Software

- Patient Registration: Manually or DICOM Modality Worklist
- Patient size selection: Pediatric, Small, Medium, Large Adult
- Image Acquisition + QC Tools (brightness/contrast, flip, rotate, zoom, annotations, measurements zoom, pan, window/level, mag, crop, invert, line measurement, angle measurement, text, arrow, L&R Markers, clockwise rotation, counter-clockwise rotation)
- Image Preview in 3 Seconds
- DICOM Store/ Transfer to PACS
- DICOM Print to DICOM Printer or "Print to Printer" for paper printer
- Export images formatted as .jpg, .tiff, .bmp, and DICOM (with or without Viewer) to CD or other media
- Archive to CD/DVD – Archive to removable drive
- Hard disk capacity warning – Scheduled periodic back-up warning
- Preconfigured with default anatomical exam tree and image processing parameters
- Black surround fill
- Delete Image
- Stitching – Manually and Auto
- Remote access via TEAM-Viewer
- DR Trigger Mode: (using generator interface cable) – Detector receives signal that generator is prepared to generate X-rays
- AED Mode – Automatic Exposure Detection: The detector detects actual amount of X-rays without any connection to the generator, and then performs image acquiring according to image acquisition time and transmits the image data – no signal used (no need to connect to generator interface cable)

Remote Service Support Software

- TEAM-Viewer Remote Access Software Included (allows for WEB-Based Remote dial-up support)
- Download files and maintenance instructions. Transfers files between the workstation and a service representative

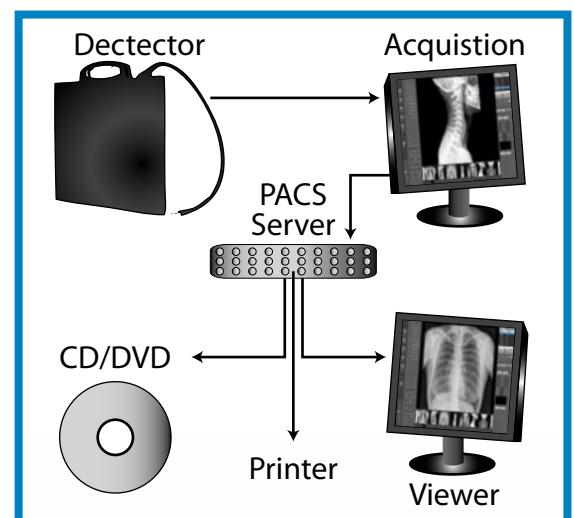


DRive includes PACS Server "Software" & DICOM "Software" (Optional User Feature)

- DICOM PACS Server Software Multi-modality
- Archives patient studies/images in DICOM format as sent from the Acquisition Console
- Export feature with images formatted as .jpg, .tiff, .bmp, and DICOM (with Viewer) to CD or other media

DICOM Viewer "Software"

- Query and Retrieve of patient studies/images from QX Server to remote viewing workstations
- Unlimited Client Licenses



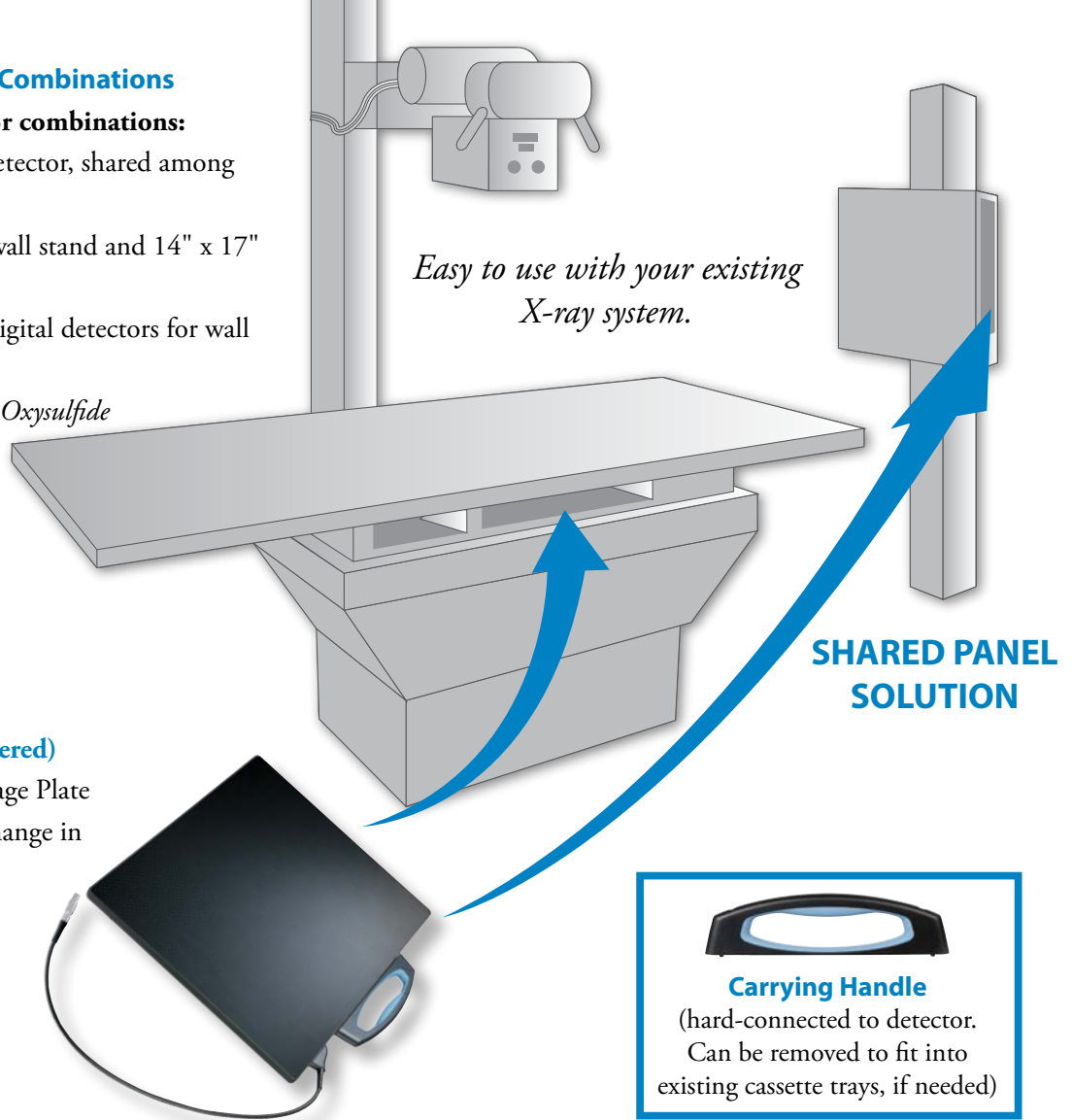
DRive will fit in your budget

DRive Multiple System Detector Combinations

DRive offers flexible digital detector combinations:

- Single-detector: 14" x 17" digital detector, shared among the wall stand, table/table top
- Dual-detector: Fixed 17" x 17" in wall stand and 14" x 17" digital detector for table/table top
- Dual-detector: Two (2) 14" x 17" digital detectors for wall stand and table/table top

** Offered with either Gadolinium Oxysulfide or Cesium Iodide scintillator, for lower dose imaging*



DR-1417 Flat Panel Detector (Tethered)

- Same size as film cassette or CR Image Plate
- Easy upgrade to DR without any change in conventional X-ray
- Large imaging area 35 cm x 43 cm (14" x 17" compatible)
- Highest image quality (3072 x 2560 high resolution)

DR-1717 Flat Panel Detector (Fixed)

- A 17" x 17" (43 cm x 43 cm) active image area allows you to capture views in one shot (the entire chest area or the 12 thoracic vertebrae) without rotating the detector unit



DRive-TRAY - "ROTATING" Digital Receptor Tray

Quantum's DRive-TRAY utilizes a rotational feature inside the tray eliminating the need to remove the digital receptor from the tray when changing orientation from landscape to portrait. A light pull on the receptor handle rotates the tray clockwise.

- Digital Tray with "ROTATING Feature" and Cabinet
- One handed manual rotation Portrait/Landscape in swivel based tray design
- Tray locks provide for safe placement/removal of receptor
- Locking tab secures the receptor within the tray



To rotate the tray hold the receptor and lightly pull clockwise.

DRive DR Detector Specifications

	DRIVE Specifications	DR-1417 (Tethered)	DR-1717 (Fixed)
Purpose	General Radiography	✓	✓
Field Of View		14"x17"	17"x17"
Scintillator	CsI (Cesium Iodide) or Gadox (Gadolinium Oxysulfide)	✓	✓
Pixel Pitch	140 Microns	✓	✓
Grayscale	14 bit, 16,384 grayscale	✓	✓
Spatial Resolution	Min. 3.5 line pair/mm (Nyquist Resolution)	✓	✓
Image Matrix Size		2560 x 3072 pixels (7.8 Mega Pixels)	3072 x 3072 pixels (9 Mega Pixels)
Image Acquisition & Transfer Time	3 seconds	✓	✓
Imaging Plate	Carbon Fiber Plate	✓	✓
Cooling	Air Cooling	✓	✓
Network Interface	16 bit Digital Output Ethernet (1000 Base-T)	✓	✓
Power Supply		DC+24V, 0.5 A	DC+24V, 0.8 A
Weight		5.94 lbs. (2.7kg)	24.2 lbs. (11kg)
Dimensions		383 x 460 x 15mm	470 x 470 x 39mm
Panel Warranty	2-Year Warranty (24 Months)	✓	✓
Computer & Monitor	2-Year Warranty (24 Months)	✓	✓

(Specifications subject to change without notice)

Workstation

- Windows 7 Professional 32bit
- Intel Core – i5 – 2400 2.8 Ghz Processor
- 4GB DDR3 memory
- Two hard disks (2 TB) – 1TB x 2 Level 1 RAID
- Image Storage Capacity = 100,000 Images
- NIC-Broadcom Ethernet card
- DVD writer

Monitor

- 24" Wide-Screen LCD Monitor
- Native Resolution of 1920 x 1200 pixels
- Includes Keyboard and Mouse

DRive Options:

DRive-TRAY: "Rotating Tray" with Receptor Housing, for use with 14" x 17" Tethered DRive Detector

- Rotating Tray and Receptor Housing, for Landscape/Portrait positioning of 14" x 17" Tethered DRive Detector
- Allows for one-handed manual rotation of the portable digital detector within the tray

*(may not fit into all existing tables and/or wall stands)

Grids (200 Line): Recommended for use with DRive DR
QMI-DRive-INT: "Quantum Generator INTEGRATION" to DRive Workstation

- Integration of Quantum X-ray generator to DRive Console (Available on existing or new Quantum generators)
- Quantum "Q-CONNECT" Integrated Software & License for DRive Series
- Generator mini-control with on/off switch and rotor prepare/expose hand switch
- Allows for all generator service configuration, calibration, and diagnostics operated from DR console

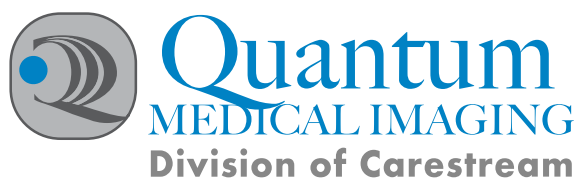
Quantum Medical Imaging, LLC | Division of Carestream

2002 Orville Drive North
 Ronkonkoma, NY 11779 USA

Tel: (631) 567-5800

Fax: (631) 567-5074

www.quantummedical.net



© 2012 Quantum Medical Imaging, LLC
 p/n: QMI-DRive (7/12)